

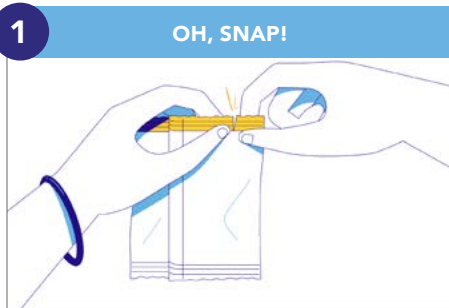


Before using Xiidra® (lifitegrast ophthalmic solution) 5%, check out the [Instructions for Use](#). This document does not replace the Instructions for Use.

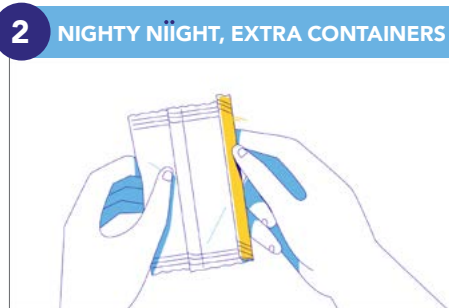
HOW TO USE XIIDRA

PREP WORK

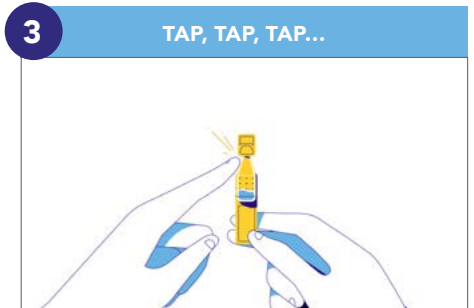
How important is handwashing? So important, the CDC made a whole microsite about it. (Nonbelievers, visit cdc.gov/handwashing.) So scrub those lovely hands first...and if you have contact lenses, take 'em out before using Xiidra. For more helpful prep work info, check out the Instructions for Use.



1 OH, SNAP!
Open the foil pouch and break off a single-use container of Xiidra. SNAP! It isn't as fun as popping bubble wrap, but it's close. This one container will be used for both of your eyes.



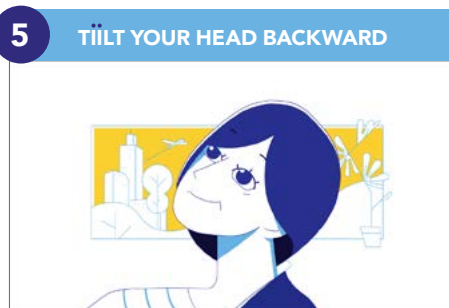
2 NIGHTY NIIIGHT, EXTRA CONTAINERS
Tuck the remaining single-use containers back in their foil pouch and tell them you'll see them soon. Fold over the edge of the pouch so the containers are nice and snug.



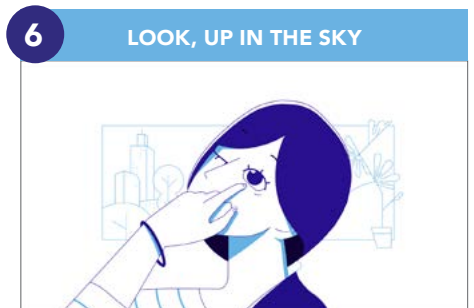
3 TAP, TAP, TAP...
Before applying, hold the single-use container upright and give it a few friendly taps to make sure the solution is settled in the bottom of the container.



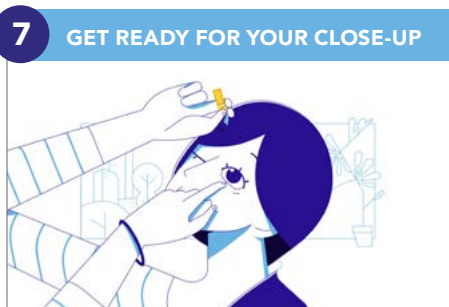
4 ...THEN TWIST THE CAP
Twist the top off like it's the world's most adorable bottle of soda. To avoid contamination, make sure the container tip doesn't touch anything.



5 TILT YOUR HEAD BACKWARD
If tilting your head back isn't your thing, try lying down. No napping!



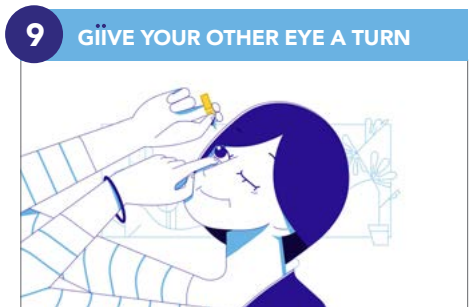
6 LOOK, UP IN THE SKY
It's a bird! It's a plane! It's...the ceiling. Look skyward while gently pulling your lower eyelid down.



7 GET READY FOR YOUR CLOSE-UP
Making sure the solution has moved to the tip of the Xiidra container, place the tip of the container close to (but not touching) your eye.



8 THE MAIIN SQUEEZE
Give the single-use container a gentle squeeze, letting one drop fall gracefully into your eye. If you miss, don't freak out...just try again. (There's some extra solution in the container in case you do miss.)



9 GIVE YOUR OTHER EYE A TURN
Using the same container of Xiidra, repeat steps 5-8 with your other eye. You only need one drop in each eye. And just like that...you're done.



Before using Xiidra® (lifitegrast ophthalmic solution) 5%, check out the [Instructions for Use](#). This document does not replace the Instructions for Use.

HOW TO USE XIIDRA

ONE MORE THING



Toss the spent single-use container and any remaining solution in the trash – don't save it. If you wear contacts, wait 15 minutes before popping them back in.

THAT'S IT.

Repeat these steps every 12 hours (morning and evening). Linger questions? Give your eye doctor a ring. And be sure to read the full [Instructions for Use](#).

What is Xiidra?

Xiidra is a prescription eye drop used to treat the signs and symptoms of dry eye disease.

Important Safety Information

The most common side effects of Xiidra include eye irritation, discomfort or blurred vision when the drops are applied to the eyes, and an unusual taste sensation. To help avoid eye injury or contamination of the solution, do not touch the container tip to your eye or any surface. If you wear contact lenses, remove them before using Xiidra and wait for at least 15 minutes before placing them back in your eyes.

It is not known if Xiidra is safe and effective in children under 17 years of age.

For additional safety information, click here for the [Full Prescribing Information](#) and [Patient Information](#) and discuss with your doctor.

You are encouraged to report negative side effects of prescription drugs to the FDA. Visit <http://www.fda.gov/medwatch> or call 1-800-FDA-1088.

Xiidra.com

